

# Software Print Server<sup>®</sup>

DATA SHEET

*The Most Advanced Enterprise Label Print Server in the World!*



*With the ability to centralize your enterprise labeling system, print up to millions of labels a day with amazing throughput, and deliver critical print status information in real time, the Software Print Server (LPS) over-delivers!*

Getting the right label to the right printer, at the right time, is paramount in a global economy where business agility to meet market demands and regulations gives you the competitive edge. Labels and documents are key components to your supply chain's performance. If threaded correctly throughout the organization, your enterprise labeling solution can become your greatest asset. An Enterprise Lifecycle Printing solution (ELP) must easily scale and handle high volumes of label throughput accurately, and without fail. Inefficiencies in the system affect delivery schedules; hurting your business with imposed fines and penalties from your distributors, clients and countries. Proper labeling is expected, but when failure in compliance, using the wrong label template, or a printer problem places your business at risk, the power of the right print server is of utmost importance.

## Quick Features

### Centralization

- Gain flexibility and control by enabling the centralization of labels and documents
- Design, automate, and print from anywhere, anytime while driving labels and documents from ERP, WMS, SCM or custom/homegrown systems

### Integration & Compliance

- Support for product, container and shipment label standards assures compliance with strategic business partner and/or regulatory agency label requirements

### High Performance

- High-speed TCP/IP Socket connectivity with Software Print Servers result in the rapid processing of label print request and high label production throughput
- Multiple print request are queued for each target printer with full error recovery and guaranteed delivery

### Native Printer Language

- Translate label print request into device-specific printer control language in order to deliver optimal performance

### Server Management

- Premier edition features advanced admin tools for increased control and lower maintenance costs

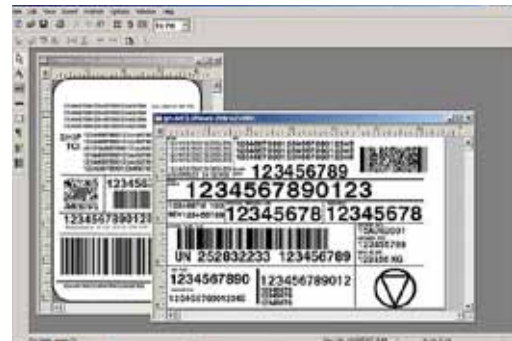
## Design Label Templates!

The Software Label Manager® design tool comes standard with every edition of the Software Print Server®.

Achieving an optimized enterprise labeling solution typically requires a print server that is “future proof,” i.e. it’s flexible, scalable, and easily integrates into existing Enterprise Resource Planning (ERP),

Warehouse Management Systems (WMS), or Supply Chain Management (SCM) systems—without disruption. It can efficiently automate business functions, communicate natively in almost any printer language, optimize templates needed for compliance standards and allow real-time visibility into a print network. It simply never fails.

The Software Print Server delivers all of this functionality and more. As the leader in Enterprise Lifecycle Printing (ELP), we pride ourselves in having built the most advanced print server in the world. We continually improve our products so you can get on with improving your business.



## Delivering the Right Label to the Right Printer at the Right Time

The Software Print Server® allows full integration with enterprise applications. It offers advanced business logic by providing you with flexibility, agility, and accuracy while also leveraging the power of native thermal printer drivers and print languages. As a part of the Enterprise Lifecycle Printing (ELP) solution, these Software Print Server benefits stand above the competition:

**One Print Server for All Printers.** Software Print Server provides support for leading printer languages as well as 600 printer models; translating label print requests into native printer language easily. Eliminate costly device-specific code and optimize system performance by increasing speed in your labeling infrastructure and off-loading business-critical applications burdened by resource-intensive barcode label printing and RFID smart label encoding. No more searching for a particular printer model when creating a new label—find the printer language your printer supports and start designing. Finger Print/Direct Protocol, ZPL2, IPL, EPL printer and languages are supported.



### What is PSG?

Software prides itself in its dedicated **Professional Services Group (PSG)** who have a depth of experience to assist with your toughest issues. Software offers system consulting, analysis and configuration assistance training, best practices and more.



### Business Logic Filters

Fully integrate your SAP®, Oracle® or legacy system and leverage business logic to set up and make changes on-the-fly to labels without requiring application-level programming or coding changes to source applications.

- **Simplify and Optimize Label Template Design.** Because a single label template can print to different printers, you gain the flexibility you need to optimize multiple printer models. This reduces maintenance and overhead and introduces agility to your printing lifecycle. The Software Label Manager design tool comes standard with every edition of the Software Print Server.
- **Integrates Easily with Business-Critical Applications.** Software Print Server links business-critical applications such as Enterprise Resource Planning (ERP), Supply Chain Management (SCM), and Warehouse Management Systems (WMS) to the label printing infrastructure. Software’s products support connectivity to the broadest range of applications including SAP®, Oracle®, and other enterprise legacy systems. The Software Print Server delivers uniform control of the print process, from design through production.



## 24x7 Support

Software offers [24x7 support](#) to minimize the risk and associated costs of an interruption in product labeling and to maximize your return on investment.

Advanced Server Management Means More Control. The Premier Edition of the Loftware Print Server features advanced administration tools that enable organizations to centralize operations for increased control and lower maintenance costs. Advanced management tools including proactive detailed print status, data reporting, and SMTP capabilities allow IT professionals to monitor their entire network of printers and more effectively manage their label printing environment.

# LOFTWARE LABEL MANAGER®

## Proven Industrial Strength Label Design and Printing

The Software Label Manager is a label design and printing package that facilitates customer and internal labeling mandates. With it, you can create virtually any type of barcode labels. Low volume printing can be achieved with one of the included 'stand alone' printing modules. Labels created can also be used with the Software Print Server® for large-scale printing and/or integration with Enterprise Resource Planning, Supply Chain or Warehouse Management Systems.

### Ease of Use, Right Out of the Box

- Practical wizards and templates for configuration, design and printing
- Multi-document interface for editing and viewing more than one label at a time
- Thumbnail and label preview modes that include actual data
- Range and On-Demand Printing from manual entry or database output

### Powerful Data Management

- Support for ASCII files and ODBC databases
- Formula builder for real-time data parsing and mathematical operations
- SQL Assistant for one-time use and saved queries
- Variable graphics file retrieval for inserting pictorial content
- Database speed search with filtering capabilities
- JavaScript Scripting provides the capability to modify the information displayed in any or all of the individual fields in a label. JavaScript scripts permit special data processing operations to be performed on an individual label and are executed at label run-time. Examples of JavaScript scripts include (but are not limited to) dynamic run-time calculations to change limited to) dynamic

run-time calculations to change font size within a label field based upon the number of characters in the data; changing a field text from plain to bold font; rotating label fields and barcodes based upon the data derived during the running of a script; Julian date transformations; check digit calculations to verify barcode data; Boolean logic; conditional statements (e.g., "if-then-else" expressions); and mathematical calculations.

### Virtually Unlimited Label Content Capability

- Extensive barcode symbologies  
Imported formats: Zebra ZPL, Intermec IPL and
- Monarch MPCL  
Image formats: BMP, PCX, JPG, GIF, TIF, CAL and
- MAC
- Download and bitmap True Type fonts
- Multiple languages (including Chinese and other Multibyte languages) on the same label

### Design Flexibility

- Text, paragraph, bar code, line/box, RFID and graphics fields
- Move, copy, edit, multilevel 'undo' and custom selectable zoom functions
- Rulers and grids for design accuracy
- Alignment tools
- Variable data fields in paragraph blocks
- Multi-up page printing with user defined layouts
- Automatic reformatting of labels to suit different printers

## Label Compliance

The Software Label Manager includes label templates that serve as building blocks to speed the design of compliant labels. With the Software Label Manager, companies can readily build compliant labels that adhere to the product (retail unit), container (trade unit) and/or shipment (logistics unit) label standards established by Government Regulatory Agencies (such as the U.S. Department of Defense), International Standards Bodies (GS1, EAN International, UCC, etc.), Industry Trade Groups (Automotive Industry Action Group, Health Industry Business Communications Council, etc.), Third Party Logistics and Shipping Companies (FedEx, DHL, UPS, etc.), and Strategic Business Partners (the major automotive manufacturers such as GM, Ford, Honda, Toyota, Delphi; or the largest retailers including Wal-Mart, Target, Sears, JC Penney, etc.).

## Printer Support

- Direct, native control of barcode and RFID Smart label thermal transfer and Windows printers; additional printers supported as part of Software Print Server configurations
- Local (serial, parallel, USB), LAN/WAN (TCP/IP) and wireless connectivity
- Output of cutter, head temperature, print speed, forms offset, stock type and other printer control information
- Support for printers' internal fonts, bar code and serialization capabilities
- Software Print Module available for stand-alone print-only stations

## Administration

- Centralized sharing of labels, databases and graphic files by print stations
- Audit file recording
- Label version histories
- Security features for access control

## Technical Support

Software backs its product offerings with a team of industry professionals dedicated to delivering outstanding technical support. Also available from the Software website are downloadable upgrades and documentation.

## System Requirements

- Microsoft Windows XP, Microsoft Windows 2000, or Microsoft Windows 2003

# ECnet Limited International Branches

### Singapore Corporate Headquarters

16, Jalan Kilang, #04-01,  
Hoi Hup Building,  
Singapore 159416  
T: +65 6785 5266  
F: +65 6785 0525  
E-mail: info-sg@ecnet.com

### Malaysia - Kuala Lumpur

Level 12, Suite 12.05  
Menara Summit  
Persiaran Kewajipan, USJ 1  
47600 UEP Subang Jaya  
Selangor Darul Ehsan  
Tel: +603 8024 1951  
Fax: +603 8024 6530  
Email: info-my@ecnet.com

### China - Shanghai

Rm H, 20 Floor  
Foresight Mansion  
No. 768, Xie Tu Rd  
Shanghai 200023  
People's Republic of China  
Tel: +86 21 5302 5032 / 5033  
Fax: +86 21 5302 5035  
Email: info-cn@ecnet.com

### India - Chennai

Rayala Techno Park, 144/7  
3rd Floor, Rajiv Gandhi Salai  
Kottivakam Chennai  
PIN - 600041 India  
Tel: +91 44 2454 3151 to 56  
Fax: +91 44 2454 3157  
Email: info-india@ecnet.com

### Thailand - Bangkok

2/3 Moo 14  
Bangna Tower - A, 2nd Floor  
Room no. 205  
Bangna-Trad K.M. 6.5  
Bangkaew, Bangplee  
Samutprakarn 10540  
Tel: +662 751 9663 / 9666  
Fax: +662 751 9667  
Email: info-th@ecnet.com

### Japan - Tokyo

Godo Building 6F  
Kaji-cho 1-6-17  
Chiyoda-ku  
Tokyo, Japan 101-0044  
Tel: +81 3 3526 3611  
Fax: +81 3 3526 3612  
Email: info-jp@ecnet.com